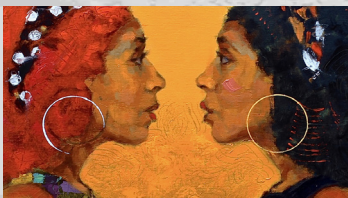


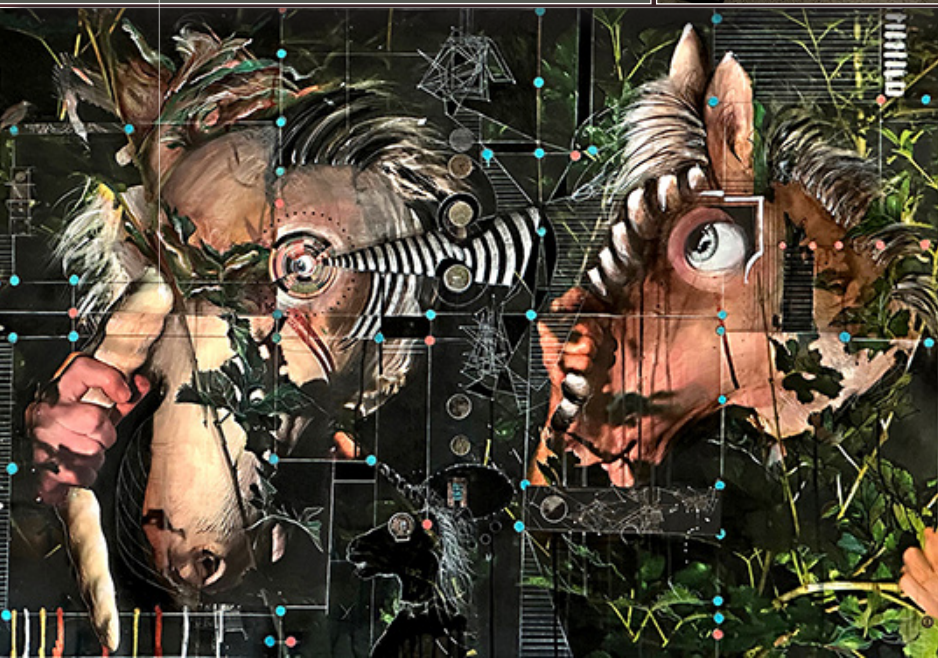
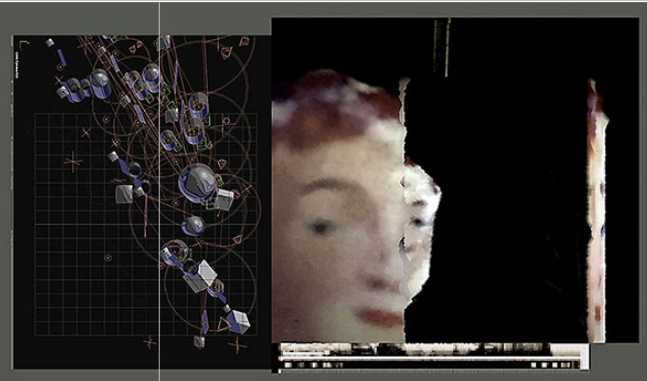
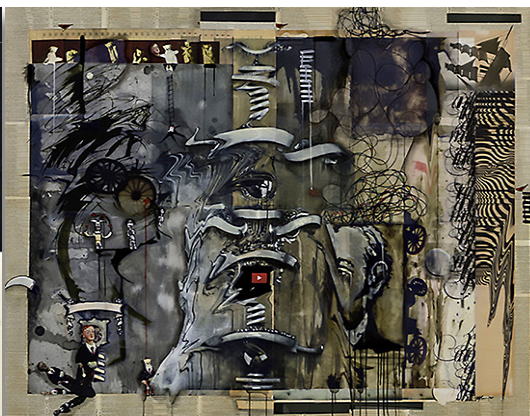
# TOOLY

JANUARY 2026





*Shelle is an Emeritus Professor of Art at Edinboro University (after a teaching career of more than 30 years), where she mainly developed and taught courses in graphic design, design history, typography and 2D design. An admitted hybrid, Barron spent a decade designing for Public Broadcasting before returning to school for her MFA in Painting. She remains passionate about the role of design in society and how art and design might change minds in our devisive culture.*



**Shelle Barron** has shown her work in juried exhibitions, invitationals, and solo projects for some time, winning more than 20 awards for her mixed media pieces. She is a past recipient of a Pennsylvania Council on the Arts Visual Arts Fellowship and a NEA Mid-Atlantic Regional Visual Arts Fellowship. Barron has completed residencies at the Brandywine Printmaking Workshop in Philadelphia, and AIR in Pittsburgh. Her work can be found in numerous private and public collections, including Blue Cross, Mellon Bank, Hoyt Institute of Art, Pittsburgh Public Schools, Clarion University, Erie Art Museum, and the collection of Geoffrey Gund. Her current obsession is to improvise (like jazz) with software programs and apps without attempting to complete tutorials . . . the results are sometimes awful and sometimes delightful. She is also a member of a steel drum band . . . an obsession found in retirement.

**[shellebarron.com](http://shellebarron.com)**

# TOADAY



JANUARY 2026 **SCHOLARSHIPS**

**DO YOU HAVE WHAT IT TAKES ?**

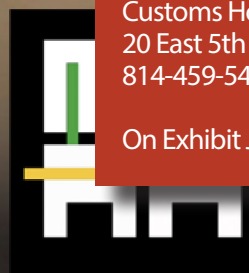
Know a high school senior that may be eligible? Visit [npaaonline.org/scholarship](http://npaaonline.org/scholarship). Submissions accepted until Friday, January 9th 2026. Email [tshannon@eriesd.org](mailto:tshannon@eriesd.org) for questions

On-line voting will take place  
January 12th through January 14th

**The Scholarship Art Exhibition  
and Award Ceremony will be at  
the Erie Art Museum  
Saturday, January 31st 5-7pm**

Located in the  
Customs House downstairs  
20 East 5th Street Erie, PA 16507  
814-459-5477

On Exhibit January 28th-February 8th

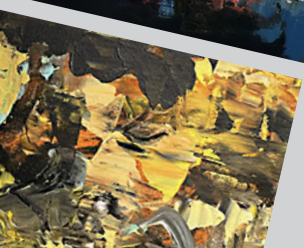


**NPAA ART SCHOLARSHIP**



## Heather Kanazawa

Her artwork is an exploration of memory and place, expressed primarily through abstraction. Her paintings are deeply rooted in the vivid recollections of her experiences in nature.



## Eliza Wolfe

is both an artist and a teacher working with children and adults of all ages. She strongly supports the mission of the NPAA in offering scholarships to students looking to pursue their careers in the arts.





## Edward Macie

is a painter/drawer of realism including still-lives, landscapes and people. My work focuses on the themes of experience and memory presented in the genre of realism. Subjects include still-lives, landscapes and people. My primary mediums are oil paint and pencil.




## Peggy Quinn

creates exquisite, one-of-a-kind unique craft pottery. My artistic vision is influenced by a deep appreciation for the traditions of Chinese and Japanese pottery, as well as contemporary fine craft pottery.





# TODAY

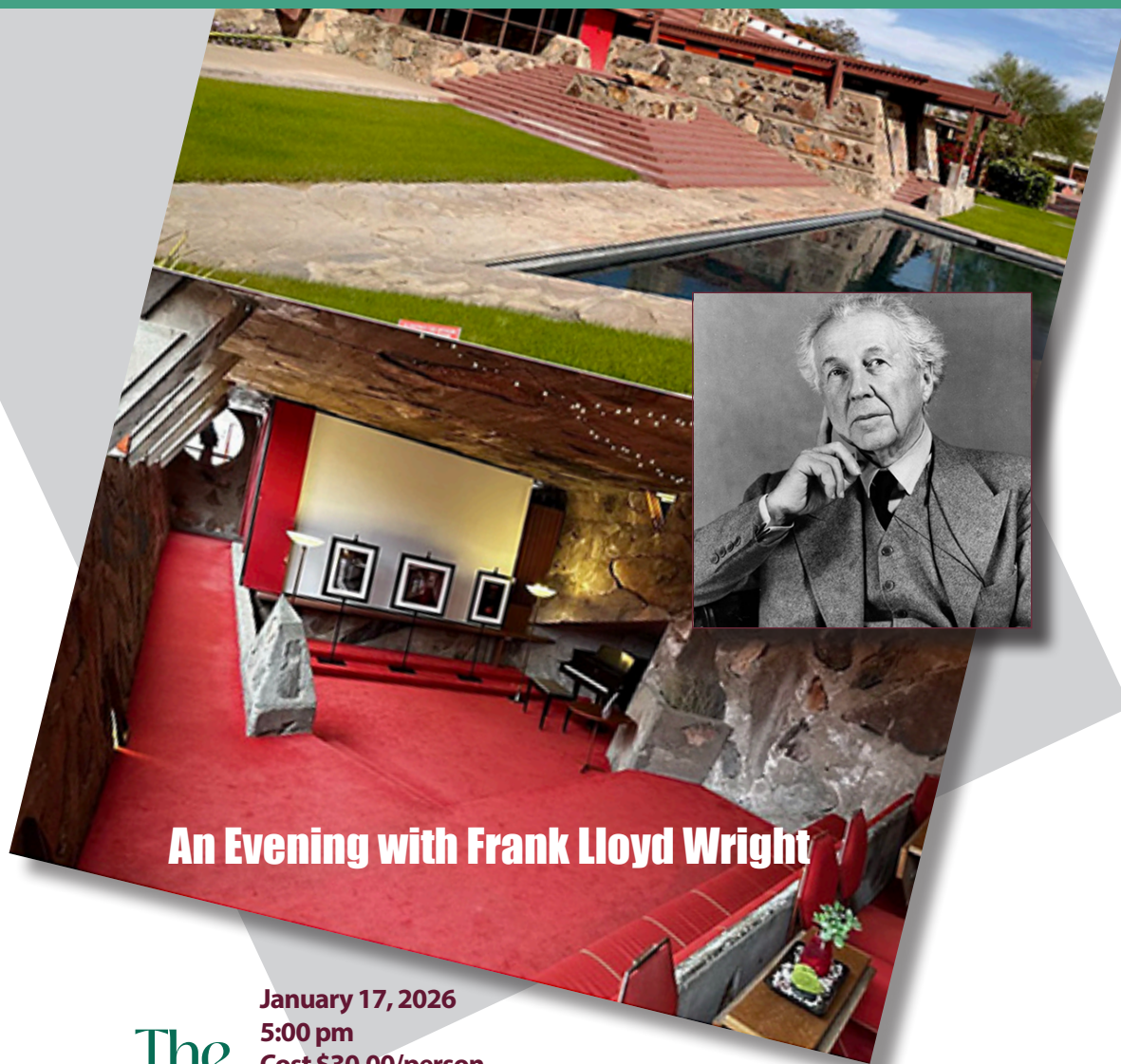


northwestern pennsylvania  
artists association

JANUARY 2026 **HOLIDAY PARTY**







## **An Evening with Frank Lloyd Wright**

**January 17, 2026**

**5:00 pm**

**Cost \$30.00/person**

**Seating is limited**

**The Galbraith Mansion at 259 West 6th Street, Erie, PA**

**You will have the opportunity to dine like FLW and learn about his approach to meals at Taliesin West.**

**His favorite chicken, salad, and more will be served, topped off with his famous birthday cake.**

**A speaker will then enlighten you with knowledge about the man himself.**

**This promises to be an event to remember.**

**The  
Woman's Club of  
Erie's  
Winter  
Dinner**

**RESERVATIONS ARE A MUST as space is limited**

**Reservations by January 9, 2026**

**Go to Woman's Club of Erie for a link or contact Marci at 814-450-3199**



# Erie Art Museum

## 103RD ANNUAL SPRING SHOW



**SUBMISSIONS OPEN!**

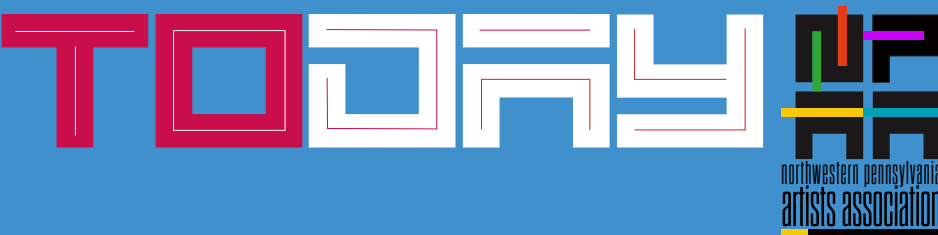
DECEMBER 1<sup>ST</sup> 2025 — FEBRUARY 1<sup>ST</sup> 2026

[erieartmuseum.org/spring-show](http://erieartmuseum.org/spring-show)

Image: Bill Miller, TV Dinner, 2022, 102nd Annual Spring Show

Submissions for  
the 103rd Annual  
Spring Show  
will open  
December 1st, 2025  
and close  
February 1st, 2026.  
View the prospectus  
and learn about the  
juror, Jenny Kendler.





JANUARY 2026 **MEMBER NEWS**

**OPPORTUNITY** Mercyhurst University is looking for a co-coordinator for the Center of Arts in Society. You can direct questions to Jodi Staniunas Hopper [jstaniunashopper@mercyhurst.edu](mailto:jstaniunashopper@mercyhurst.edu)

**MEMBERS ON VIEW** To be included in future issues of the Newsletter, send info along with images of your work about upcoming shows, exhibits and/or lectures that you'd like everyone to know about to Stacie Keyes at [stacieboca123@gmail.com](mailto:stacieboca123@gmail.com)

**NPAA WEBSITE** Always looking for new work (images) that we can feature on the Home page on both the slide show and the Gallery. Send hi-res images (approx. 2M each) to Jack Stone at [sjconnects@gmail.com](mailto:sjconnects@gmail.com) . . . *or questions if you're not sure.* We're also willing to help any member who would like to update or create their portfolio page

**OPEN BOARD POSITIONS** Treasurer, Director/Exhibitions and Committee Crew. Anyone looking to make a difference and have your voice heard in the future of the NPAA?

**HAPPY  
NEW  
YEAR**